



SILVERLAKE
DORSET

LAKESIDE LIVING AT ITS FINEST



WELCOME TO SILVERLAKE

Rest, revive and recharge

Silverlake, Dorset is the ultimate country retreat, providing design-led holiday homes in a secure setting, looking out onto freshwater lakes and sweeping countryside views. Nestled in the Dorset countryside, just a pebble's skim from the stirring Jurassic Coast, it is the perfect place to enjoy some downtime from the crazy pace of urban life.

Contents

THE ESTATE	4
HOLIDAY HOME OWNERSHIP	6
AVAILABLE DESIGNS	8
WHY INVEST?	12
HABITAT ESCAPES AND ON-SITE BENEFITS	13
LEISURE AND ACTIVITIES	14
THE SPA AND FUTURE PLANS	16
FOOD & DRINK	18
SITE PLAN	19
A SUSTAINABLE WAY OF LIFE	20
WHY DORSET?	22

“Bringing people, ecology and award-winning architecture together”

SILVERLAKE ESTATE

Discover Dorset

Situated close to the **UNESCO World Heritage Jurassic Coast**, Silverlake was formerly the site of WW2 RAF Warmwell. Working together, our expert team of ecologists, conservationists and architects have created an endless landscape which is home to beautiful wildlife and everything the great outdoors offers.

Our modern country Estate provides safe, **brehtaking holiday homes based around calm freshwater lakes** and waterways with sweeping views.

There are countless ways to enjoy the great outdoors, with adventurous on-site activities, an **award-winning spa** with an outdoor heated infinity pool and a perfectly placed restaurant.

Many of **Dorset's best beaches**, historic towns, unspoilt countryside and much-loved attractions are close to the Estate, making Silverlake the perfect place to own a holiday home.



“An exceptional lifestyle investment”



YOUR HOME AWAY FROM HOME

Bringing people, ecology and award-winning architecture together

Owning a **home-away-from-home** at Silverlake provides a sanctuary for your family and friends and a **lucrative investment opportunity** with the potential for holiday rental income.

From buying a **freehold plot** to turning the key on your new holiday home, we ensure the process is as frictionless as possible. Our **future-proofed luxury holiday homes** are a statement and a sanctuary where families can relax, revive and reconnect.

- 2.5 hours from London
- Perfect 'Lock up & leave'
- Freehold ownership
- 10 minutes from the coast
- Stamp duty savings
- Onsite rental agency



SUSTAINABLE COMMUNITY

An ethical investment

Whilst smaller villages and seaside towns are becoming increasingly overwhelmed with the rise in visitor numbers over peak dates, Silverlake is a **sustainable**, purpose-built development, so there is minimal effect on the environment and surrounding communities. As the Estate is **self-contained**, it avoids creating an off-peak coastal 'ghost town' and will not price the local population out of the housing market.

Silverlake is part of **Habitat First Group**, a development company founded on the principle of creating holiday home communities that share a deep love for Mother Nature. Our ethos is to protect and nurture the natural environment, with Silverlake built on a former quarry which is now a flourishing **nature reserve**.

LET THE JOURNEY BEGIN

An exceptional lifestyle investment

Homes at Silverlake are not just property investments. They are an **ethical choice** and an investment in an exceptional lifestyle for your family. Investing in a property freehold at Silverlake comes with a tidy **tax saving**. Silverlake owners are purchasing a freehold plot, leading to a lower tax bill than buying a ready-made holiday home, with **savings on stamp duty** and VAT.

British holiday lets are an expanding market and with an onsite holiday rental company; **Habitat Escapes**, Silverlake offers an easy holiday rental opportunity. Short-term lets can be much more profitable than longer-term lets. Tax benefits for holiday lets are also not afforded to buy-to-let landlords, making a huge difference in profitability.

CREATE YOUR PERFECT HOME

Award-winning architecture

Each village development at Silverlake has its own unique **eclectic mix of architecture and natural materials**. Make Silverlake your second home and you'll be free to create a Dorset holiday home that's truly unique to your family.

Choose one of our **freehold holiday home plots** with planning permission for a sustainable design, created by some of the world's leading architects. Recommended **builders with 25 years of experience** are on hand to help you build and bespoke your property with a range of sustainable materials and finishes.

“Calm fresh water lakes and waterways with sweeping views”



A LUXURY VIEW

Lakeside plots

Each lakeside plot benefits from breath-taking views over **natural watercourses** and the rolling Dorset countryside. With **lakeside access**, the properties are ideal for families and couples who enjoy water sports or simply prefer to sit back and relax, listening to the sound of water lapping on their own jetty.

“We look out over the lake in the morning and feel so lucky to live here”

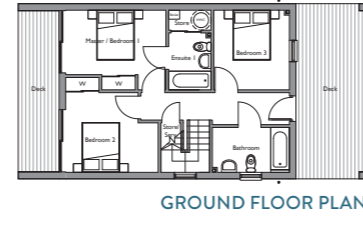
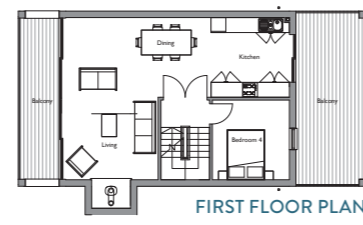
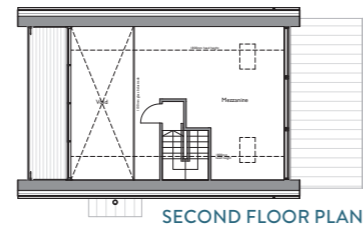
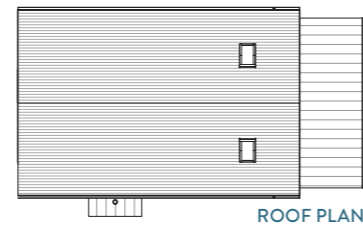


SET WITHIN NATURE

Natural retreats

These tranquil plots are nestled within their own **private nature garden**, looking out over natural beauty with **woodland views**. These plots are ideal for young families and couples with pets who would like to be away from the water's edge.

“We're proud to be involved in a community that gives so much back to the local area”

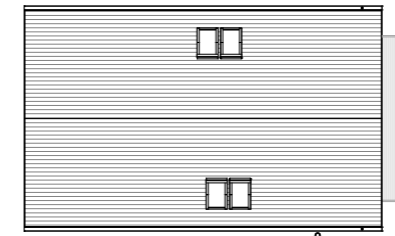


*Designs subject to change

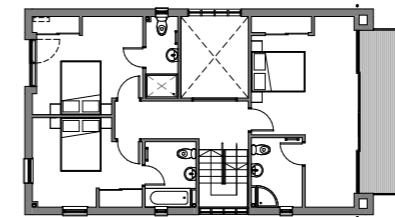
AWARD-WINNING DESIGN

Sun House

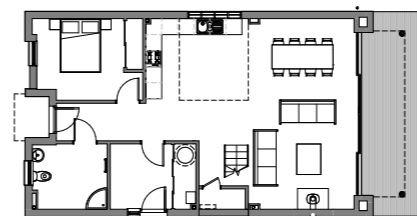
The four-bed Sun House, designed by Richard Reid Associates has won many awards. This property offers a **large open-plan living** area on the first floor which has a balcony on either end of the property, allowing natural light to flood in. The second floor offers a mezzanine level, ripe for customising and a unique space from which to enjoy **the beautiful, elevated views**. The design has won many awards over the years and is a truly unique holiday home. Available as a 4 or a 5-bed design.



ROOF PLAN



FIRST FLOOR PLAN

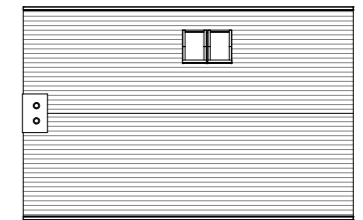


GROUND FLOOR PLAN

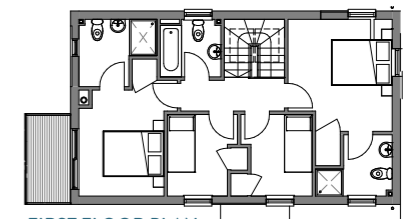
MODERN, SPACIOUS DESIGN

2 Storey Barn

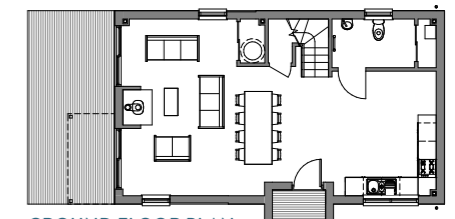
Designed by architect Wilmore Iles, this design incorporates all the design features of the **spacious, modern Dorset Barn** spread over two floors. With 4 bedrooms and 4 bathrooms this is now one of Habitat First Group's most popular designs, the double-height void over the kitchen with strategically placed roof lights helps to bring the outside in and creates a strong connection with the outdoors.



ROOF PLAN



FIRST FLOOR PLAN



GROUND FLOOR PLAN

COUNTRY CHARACTER AND CHARM

4-Bed Summer House V5

Our 4-bed Summer House design is full of **country character and charm**. Wrapped in timber and render with its eye-catching clean lines, incorporating large windows, **open-plan spaces** and a glazed gable end to fill the property with natural light. This property benefits from a first-floor balcony and backs onto a nature reserve for a full country experience.

*Designs subject to change



RESALE HOMES

Experience life on the lakes sooner

For those looking for an **immediate property investment**, we offer the rare opportunity to buy an established holiday cottage or contemporary home for resale on our private Estate.

Buying a resale home has many advantages. You can move in straight away with **no build time** and start to enjoy life on the Estate.

We have a range of prestige homes on our resale portfolio, each built to a high specification with **uniquely designed features**.

Our specialist resales team will be delighted to discuss investments available, explain the fantastic onsite facilities and lifestyle opportunities and guide you through our range of homeowner services, including Habitat Escapes onsite rental service.

For more details contact:

✉ resales@habitatescapes.com

☎ 0333 241 6616



HOLIDAY HOME RENTAL

Expert advice and service from the start

With an expanding UK holiday let market, now is a great time to consider a **holiday rental investment**. Nestled in the heart of rural Dorset, Silverlake is just **2.5 hours from London** and 10 minutes from the coast, ensuring plenty of visitors throughout the year. The perfect location for a family escape, romantic break, dash from the city or group get-together.

Short-term holiday lets can be much more profitable than longer-term lets, given that you can charge the same for a week's holiday as you can for a month's long-term let.

When you're not using your property, you can rent it out, **earning around £34,000*** profit per year. As Silverlake's official holiday rental company, Habitat Escapes offers a professional one-to-one service and removes all the traditional headaches associated with renting a holiday home.



We understand the emotional and financial costs associated with your holiday home and that this is an important asset to you and your family – we know that we need to look after it as well as you would.

Our **full-service package** includes housekeeping and national marketing campaigns. We also offer a range of optional extras from maintenance packages such as jet washing and stove servicing to keep your property as new as the day you purchased it.

For more details contact:

✉ owner@habitatescapes.com

☎ 0333 241 6616



*Based on gross booking value, before any deductions. Subject to property size



TIME FOR FUN

Activities at Silverlake

Silverlake is a **natural 'playground'** offering an array of activities, from mountain biking to zip-wiring across the water. Whether you are an avid adventurer or a relaxed rambler, there is something for everyone to enjoy on the Estate.

Enjoy the tranquil waterways on a **kayak, canoe, or paddleboard**, discover the Estate's pathways and beyond on two wheels, or while away the hours with a fishing rod on Otter Lake.

Tennis & Muga Court

With a beautiful view over Beaumont Lake, the **tennis court and 3G artificial turf multi-use games area (MUGA)** in Beaumont Village offer the perfect spot for an entertaining game of five-a-side football with family and friends.

Pilates & Fitness Classes

Other activities include exercise classes in the great outdoors, providing plenty of **eco-therapy**. Our team offers **Pilates** and a summer **Bootcamp** tailored to your fitness requirements, delivered by a Personal Trainer to keep you feeling fit within Silverlake's natural surroundings.



Equipment Hire & Tuition

The **on-site Activity Hub** offers bike rental, water sports equipment hire, expert tuition and fantastic local knowledge to help you to explore the best of Dorset. All bookings are made easy and convenient with an online booking portal.



Children's Playground & Miss Dormouse Trail

Younger children can run, jump and slide to their heart's content at the dedicated **outdoor play area** or enjoy the Miss Dormouse treasure trail around Silverlake's **expansive nature reserve**.



Fishing at Silverlake

If you're a seasoned angler, you'll be pleased to learn that just a short 5-minute walk from your property, sits Otter Lake. An **exclusive lake for our guests only**, home to Carp, Tench, Bream and Roach ready for you to cast off and fish until your heart's content.



The Yurt

Our traditional handmade yurt is the perfect spot for a lazy afternoon playing board games, telling stories, **reconnecting with loved ones** and making new friends around the log-burning stove.



SHAPED BY NATURE

Award-winning spa

Nature has a powerful, calming effect on our mind, body and soul. We believe in a **natural, holistic and nurturing approach to wellness.**

Set amidst the Dorset countryside on the edge of the tranquil Beaumont Lake, the **Hurricane Spa** is at one with its surroundings, incorporating natural materials that reflect the warm seasonal hues of the outdoors.

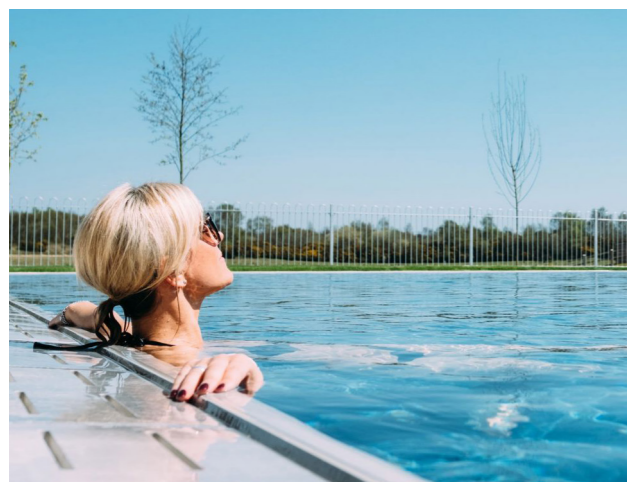
Our experts are on hand to tailor-make treatments to your individual needs. Our treatment menu has been handcrafted with wellness at the forefront.



WORK OUT & UNWIND

Fitness and wellbeing

Our technogym is light and spacious, with **state-of-the-art equipment** for cardio, weight training and stretching sessions. Enjoy uninterrupted views over the pool, lake and surrounding countryside through floor-to-ceiling windows.



COMING SOON

An alfresco spa experience

Renowned for having a special relationship with sustainability and **ecology**, Silverlake's forthcoming **alfresco spa** will be nestled in the Dorset landscape, enabling visitors to absorb the positive benefits of the natural world.

The spa will have both an **indoor and outdoor pool**, with sixteen **lakeside treatment rooms** and four lakeside cabanas. Situated in a prime position on the waterside of one of the Estate's many lakes, visitors will be able to go 'wild' swimming and have access to water sports equipment, Kneipp walks, relaxation hubs, a floating fire pit and **hydrothermal experiences.**

The Firefly restaurant will sit lakeside and include an open plan kitchen, bar, shop, events space and terrace with views across the water and plenty of areas to savour the surrounding landscapes and tranquillity of the spa.

Coming soon to the Silverlake Estate – A spa experience like no other...



SIT BACK AND RELAX

The Hurricane Terrace & Bar

Nestled in the heart of the Estate, the Hurricane Terrace and Bar offers an **oasis of calm** where the whole family can kick back, relax and enjoy **locally sourced** food and drink overlooking Beaumont Lake and the rolling Dorset countryside.

If you're feeling peckish, you can enjoy a variety of snacks and **locally sourced dishes with a Mediterranean twist**. Indulge in an array of tempting local drinks, traditional favourites and **bespoke cocktails** inspired by our beautiful county.



RUSTIC CHARM

The Pizza Shack

Take a break from feeding the family and enjoy authentic pizza served from our **woodfired pizza** oven next door to the Yurt. Each pizza is crafted from hand-stretched sourdough bases and loaded with fresh, local ingredients.



*Please note the Terrace Bar operates on a seasonal basis and food and drink offerings are subject to yearly opening times which are reduced during the off-peak season.



“What an awesome place to unwind and make memories. This is my happy place”



Silverlake app

In the app, you will also find important information relating to seasonal opening times for key facilities, spa treatments, The Activity Hub and the best things to do at Silverlake.

Silverlake map

Explore Silverlake, Dorset with our **new app**, offering an **interactive map**, highlighting key Estate facilities, lakeside nature trails and off-site local walks around the Dorset countryside.



RESPECTING AND ENHANCING NATURE

Our approach to sustainability

We strive to have a **positive impact in everything we do**, respecting nature and enhancing the health and well-being of families who choose to spend time at our natural Dorset retreat. We are one of the only Estates in the South West to have been **awarded Building with Nature status**, thanks to our sensitive approach to biophilic living, sustainably developing holiday homes and being nature-inclusive.

Everything we do works towards Habitat Zero, our pledge to deliver an environmentally responsible, **carbon-neutral business by 2030**.

“Time away in nature is always time well spent.”



Habitat Zero

Habitat Zero is Habitat First Group’s commitment to delivering an environmentally responsible, carbon-neutral business by 2030.

Building with nature

Completed phases of Beaumont Village, Silverlake are **accredited as Excellent** by the Building with Nature accreditation scheme.

Carbon neutral build

We use renewable timbers, ensure **energy efficiency** and source as much as possible locally. Our first two sites have been awarded excellent status for green infrastructure.

Ecology & conservation

All our sites focus on **nature conservation**, creating new habitats for a wide range of protected species and species of conservation concern that live on our sites.

Tree planting scheme

We protect and enhance native woodlands; are planting thousands of trees; and are offsetting our business mileage by supporting Trees for Cities.

Carbon offsetting

We plan to offset carbon emissions on behalf of our staff and homeowners.

Electric vehicles

We aim to make all our company vehicles electric - including sales cars, bikes and golf buggies. We will provide **EV charging points** at all our Estates for homeowners, with some already in action.

Grazing

Where possible we manage our habitats with a range of grazing livestock from ponies to pigs and cattle. This reduces the reliance on power tools required for habitat management.



Silverlake Dorset are proud to work in partnership with Play it Green.



Dorset's coastline offers so much to explore with the family

THE LOCAL AREA

Dorset - a place of timeless beauty

The most striking parts of Dorset's historic county are within easy reach of Silverlake, from the **Blue Flag beaches** at **Sandbanks** to the fossil-filled cliffs of **Lyme Regis**. Lying just north of the rugged **Jurassic Coast**, there is so much to discover along this World Heritage Site, it's hard to know where to start.

Whether you visit the dramatic coastlines, coves and castles or enjoy the picturesque landscapes, Dorset offers a diverse array of riches. So, if you're here for the day, the weekend, or lucky to be here longer, it's easy to get the most out of your stay.



The Estate is ideally situated just outside the county town of **Dorchester**. Known as Thomas Hardy's town, Dorchester's origins go back to Roman times and is perfect for a leisurely day mooching around the independent boutiques, bars and restaurants.

Keeping every family member happy is easy as Silverlake is a pebble's skim away from Dorset's **award-winning beaches**, with **Ringstead Bay** only a 10-minute drive. Ideal for all the family, this quiet stretch of West Dorset coast has an unspoilt shingle beach with incredibly clear water. Take a paddleboard, pack a picnic, or walk across the cliff tops on the **Jurassic Coastal Path**, which will take you the length of Dorset and beyond.

Pack your walking boots and enjoy a brisk walk in nearby **Moreton Forest**. Art lovers can combine a day out in the great outdoors while enjoying a feast for the soul at neighbouring **Sculpture by the Lakes**.

All this makes for exciting, adventurous and intriguing escapes for all ages, making Dorset an excellent holiday spot or future investment.

Beautiful walks are abundant if you fancy exploring the coastline on foot. From cliff-top hikes along the scenic coast to shorefront strolls looking for fossils, the Jurassic coastline is the perfect backdrop to the southwest coastal path. Explore some of Dorset's most famous spots, such as **Golden Cap**, **Lulworth Cove** and **Durdle Door**.

Discover Dorset's rich history, home to Thomas Hardy and T.E. Lawrence, well known as Lawrence of Arabia. Discover the ancient ruins of **Corfe Castle** or while away the hours at picture-postcard-pretty **West Bay**, a mere 30 minutes away, well known for the beloved Broadchurch series and host to thousands of fossils, which are discoverable along the coast. Adventure out and find yourself your very own Ammonite. Or travel further afield and enjoy **Lyme Regis** and its dramatic cob.

01305 853490

live@silverlakedorset.com

  [@silverlakedorset](https://www.instagram.com/silverlakedorset)

www.silverlakedorset.com



PART OF  HABITAT FIRST

